



Department of Public Works

## Engineering Division

Robert F. Phillips, P.E., City Engineer

City-County Building, Room 115  
210 Martin Luther King, Jr. Boulevard  
Madison, Wisconsin 53703  
Phone: (608) 266-4751  
Fax: (608) 264-9275  
engineering@cityofmadison.com  
[www.cityofmadison.com/engineering](http://www.cityofmadison.com/engineering)

### Deputy City Engineer

Gregory T. Fries, P.E.

### Deputy Division Manager

Kathleen M. Cryan

### Principal Engineer 2

Christopher J. Petykowski, P.E.

John S. Fahrney, P.E.

### Principal Engineer 1

Christina M. Bachmann, P.E.

Mark D. Moder, P.E.

Janet Schmidt, P.E.

### Facilities & Sustainability

Jeanne E. Hoffman, Manager

Bryan Cooper, Principal Architect

### Mapping Section Manager

Eric T. Pederson, P.S.

### Financial Manager

Steven B. Danner-Rivers

February 26, 2019

## NOTICE OF ADDENDUM

### ADDENDUM NO. 3

City of Madison, Engineering Department

### CONTRACT NO. 8238

### METRO TRANSIT PHASE 1 – SERVICE LANE ADDITION

This addendum is issued to modify, explain or correct the original Drawings, Specifications, or Contract Documents marked as *Metro Transit – Service Lane Addition – Phase 1, City of Madison, Contract #8238, as issued on January 17, 2019* and is hereby made a part of the contract documents.

This addendum consists of the following documents:

- **A drawing sheet that was referenced in Addendum 2, but not attached to Addendum 2.**

Please attach these Addendum documents to the Drawings (Exhibit A), Specifications (Exhibit B), and Proposal Specifications in your possession.

1. **GENERAL CONTRACT CONDITIONS**

*No Changes*

2. **GENERAL QUESTIONS AND ANSWERS**

*No Changes*

3. **ACCEPTABLE EQUIVALENTS**

*No Changes*

4. **SPECIFICATIONS**

*No Changes*

5. **DRAWINGS**

A. **Mechanical**

- i. Drawing M-102 was referenced in Addendum 2, but not attached

6. **PROPOSAL SPECIFICATIONS**

*No Changes*



Please acknowledge this addendum in Section E on page E-1: Bidder's Acknowledgement on Bid Express.

Electronic version of these documents can be found on Bid Express at <https://www.bidexpress.com/> and the City of Madison web site at <http://www.cityofmadison.com/business/PW/contracts/openforBid.cfm>

If you are unable to download plan revisions associated with the addendum, please contact the Engineering office at 608-266-4751 to receive the material by another method.

**For questions regarding this bid, contact:**

Mead & Hunt, Inc.  
Stacey Z. Keller, AIA  
PH: 608-443-0590  
Email: [Stacey.keller@meadhunt.com](mailto:Stacey.keller@meadhunt.com)

City of Madison  
Jon Evans, PE, Project Manager  
PH: 608-243-5893  
Email: [jevans@cityofmadison.com](mailto:jevans@cityofmadison.com)

Sincerely,

A handwritten signature in black ink, appearing to read "R. Phillips", followed by a long horizontal line.

Robert F. Phillips, P.E., City Engineer

Handwritten initials in black ink, possibly "CR".



metro transit



CITY OF MADISON  
METRO TRANSIT - SERVICE LANE ADDITION - PHASE 1  
1101 EAST WASHINGTON AVE.  
MADISON, WI 53703

ISSUED  
01/17/19 BID SET  
02/22/19 ADDENDUM 2 /  
DSPS Revisions 2

CONTRACT NO.: 8238  
RFP NO.: 4503500-170148.02  
DATE: January 17, 2019  
DESIGNED BY: DJG  
DRAWN BY: AR  
CHECKED BY: KML

DO NOT SCALE DRAWINGS  
SHEET CONTENTS  
FIRST FLOOR  
MECHANICAL PLANS  
- AREAS C & D

SHEET NO.:

M-102

**GENERAL HVAC NOTES:**

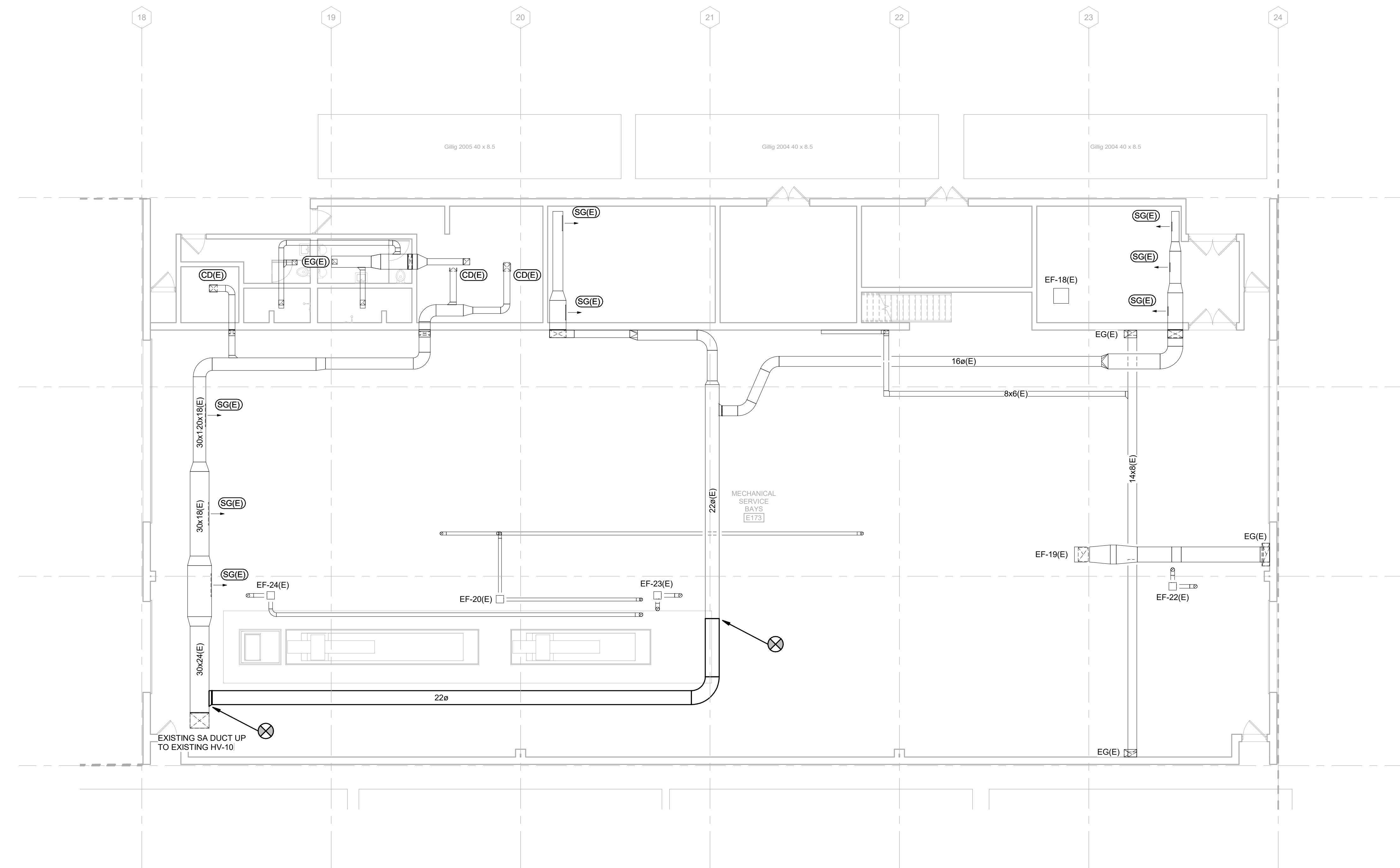
1. PROVIDE MANUAL BALANCE DAMPER AT EACH DIFFUSER, GRILLE, AND BRANCH TAKE-OFF IN ALL SUPPLY, RETURN, AND EXHAUST DUCTWORK EXCEPT KITCHEN GREASE EXHAUST DUCT. LOCATE BALANCE DAMPER AS CLOSE TO BRANCH TAKE-OFF AS POSSIBLE.
2. DUCT SIZE TO DIFFUSERS, REGISTERS, AND GRILLES SHALL BE SAME AS NECK SIZE UNLESS NOTED OR DETAILED OTHERWISE.
3. COORDINATE DIFFUSER, REGISTER, AND GRILLE LOCATIONS WITH REFLECTED CEILING PLAN.

**GENERAL PIPING NOTES:**

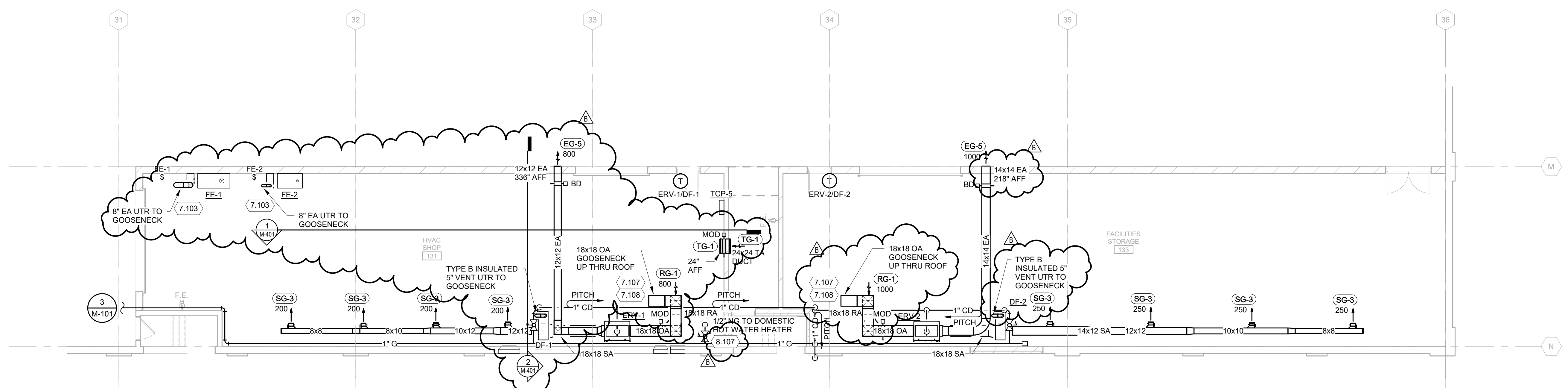
1. PIPING RUNOUTS TO ALL EQUIPMENT TO BE 3/4" UNLESS NOTED...
2. WELD-O-LETS AND THREAD-O-LETS MAY BE USED FOR BRANCH TAKE-OFFS UP TO ONE-HALF THE DIAMETER OF THE MAIN.
3. INSTALL DIELECTRIC FITTINGS WHERE PIPING OF DIFFERENT MATERIALS IS JOINED.
4. INSTALL PIPING FREE OF SAGS AND BENDS.
5. LOCATE ALL VALVES FOR EASY ACCESS. INSTALL VALVES WITH STEM UP OR HORIZONTAL.
6. INSTALL DRAIN VALVES AT ALL LOW POINTS IN PIPING SYSTEM AND ELSEWHERE AS REQUIRED FOR SYSTEM DRAINAGE. INSTALL MANUAL AIR VENTS AT ALL HIGH POINTS IN PIPING, AT HEAT-TRANSFER COILS, AND ELSEWHERE AS REQUIRED FOR SYSTEM AIR VENTING.

**KEYED NOTES**

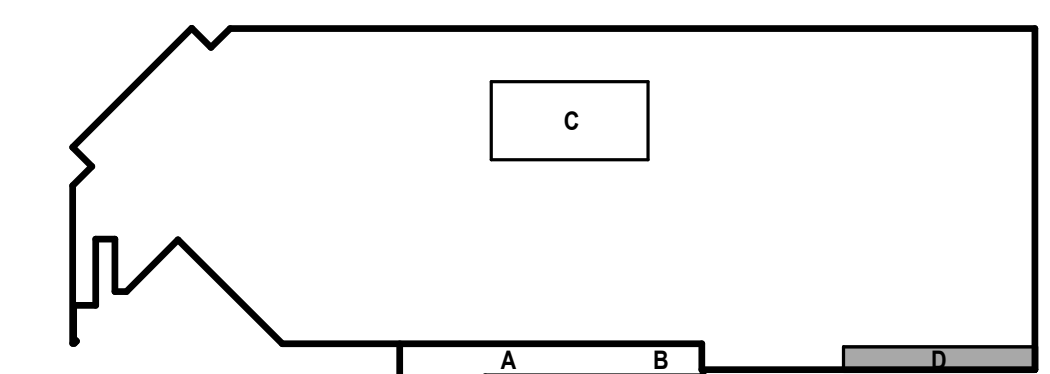
- 7.103 CONTRACTOR TO PROVIDE 304 STAINLESS STEEL EXHAUST DUCTS UTR TO GOOSENECK SERVING FE-1 AND FE-2. SEE HVAC DUCT SCHEDULE, SHEET M-601.
- 7.107 CONTRACTOR TO INSULATE OUTSIDE AIR DUCT FROM GOOSENECK TO OUTSIDE AIR DAMPER. SEE DETAIL 14, SHEET M-501.
- 7.108 CONTRACTOR TO PROVIDE NECESSARY SUPPORTS FOR OUTSIDE AIR DUCTWORK AND OFFSETS ALONG EXISTING BUILDING STRUCTURAL STEEL IN JOIST SPACE.
- 8.107 PROVIDE NATURAL GAS PIPING TO DOMESTIC WATER HEATER. PROVIDE LINE SERVICE GAS REGULATOR. VENTING SHALL BE BY PLUMBING CONTRACTOR.



TRUE PLAN  
NORTH NORTH  
**1**  
FIRST FLOOR PLAN - AREA C  
1/8" = 1'-0"



TRUE PLAN  
NORTH NORTH  
**2**  
FIRST FLOOR PLAN - AREA D  
1/8" = 1'-0"



KEY PLAN